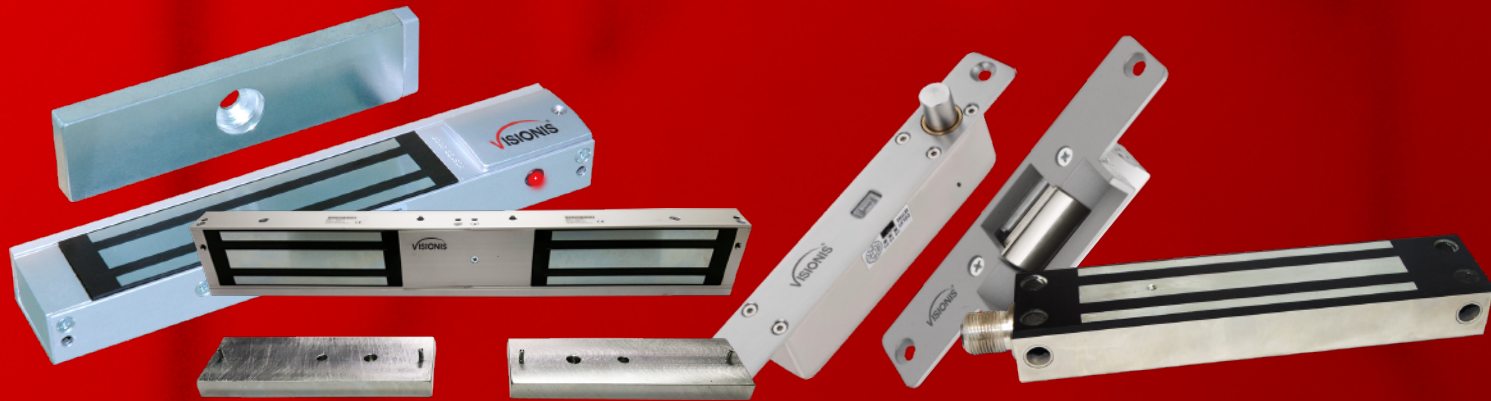




Locking Devices for Door Access Control



www.visionistech.com



www.visionistech.com

Visionis Tech provides locking devices in the form of mag locks for all type of doors, cabinets and lockers, electric strike locks for wooden and metal doors, and electronic dead drop bolt lock devices.



Electric Cabinet Lock

**3 YEARS
WARRANTY**

VIS-ML120

Voltage Input	12VDC / 24VDC
Holding Force	Up to 140lbs (63kg)
Current Draw	12V / 200mA ; 24V / 100mA (±5%)
Anti-Rust Surface Treatment	Blue Zinc Plating
Operating Temperature	0~55°C (32~131°F)
Operating Humidity	0~95% (non condensing)
Weight (Magnet)	0.7 kg (±1%)
Dimensions Magnet	36 x 69 x 26 mm (1.41 x 2.71 x 1.02 inches)
Dimensions Armature	68 x 32 x 10 mm (2.67 x 1.25 x 0.39 inches)



Holding force:
140lbs (63 kg)



Indoor
use only



Fail Safe
(It locks with power)



Input Voltage:
12 or 24VDC

VIS-ML300LED

Our maglocks are available in:



Silver Black White

Voltage Input

Current Draw

Holding Force

Anti-Rust Surface Treatment

Operating Temperature

Operating Humidity

Weight (Magnet)

Dimensions

12 VDC / 24 VDC

12V / 300mA ; 24V / 150mA (±5%)

Up to 300 lbs (136 kg)

Blue Zinc Plating

0~55°C (32~131°F)

0~95% (non condensing)

0.6 kg (±1%)

Magnet - (L)210x(W)35x(T)21 mm

Armature - (L)130x(W)33x(T)11 mm



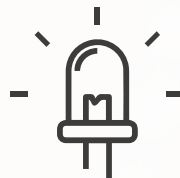
Holding force:
300lbs (136 kg)



Indoor
use only



Fail Safe
(It locks with power)



LED status
indicators



Input Voltage:
12 or 24VDC

3 YEARS
WARRANTY

VIS-ML600LED

Our maglocks are available in:



Silver Black White

Voltage Input	12 VDC / 24 VDC
Holding Force	Up to 600 lbs (272 kg)
Current Draw	12V / 500mA ; 24V / 250mA (±5%)
Anti-Rust Surface Treatment	Blue Zinc Plating
Operating Temperature	0~55°C (32~131°F)
Operating Humidity	0~95% (non condensing)
Weight (Magnet)	1.1 kg (±1%)
Dimensions	Magnet - (L)250x(W)42x(T)25 mm Armature - (L)180x(W)38x(T)11 mm



Holding force:
600lbs (272 kg)



Indoor
use only



Fail Safe
(It locks with power)



LED status
indicators



Input Voltage:
12 or 24VDC



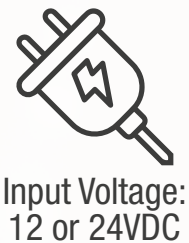
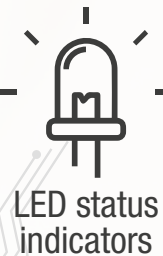
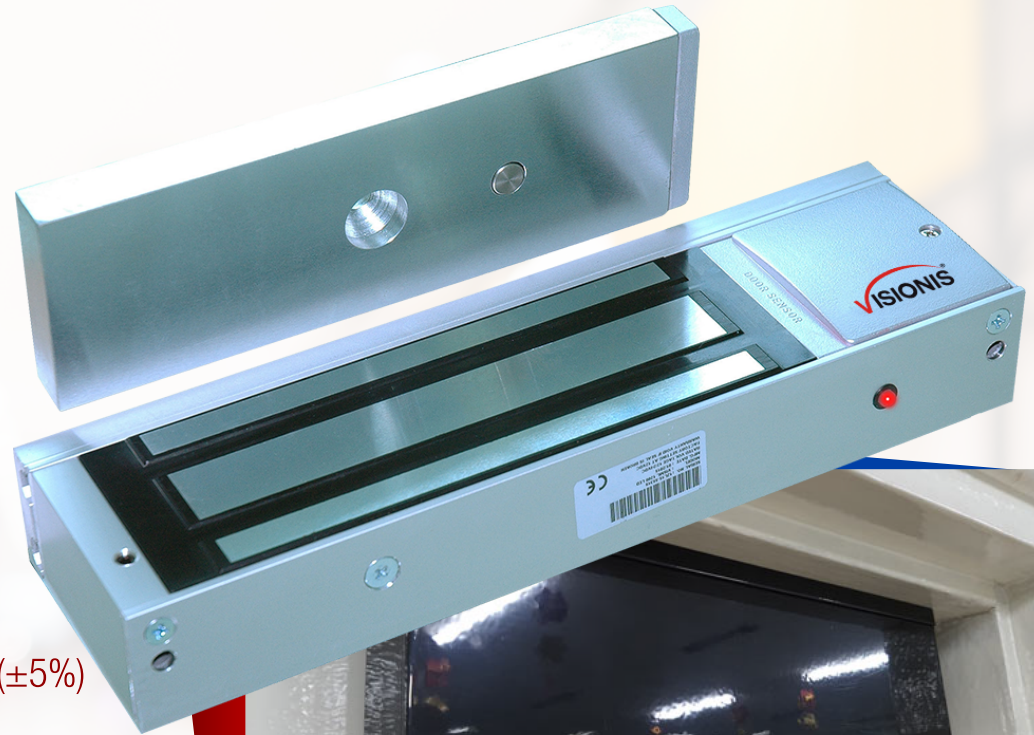
3 YEARS
WARRANTY

VIS-ML1200LED

Our maglocks are available in:



Holding Force:	Up to 1200 lbs (545 kg)
Voltage Input	12 VDC / 24 VDC
Current Draw	12V / 300mA ; 24V / 150mA (±5%)
Anti-Rust Surface Treatment	Blue Zinc Plating
Operating Temperature	0~55°C (32~131°F)
Operating Humidity	0~95% (non condensing)
Weight (Magnet)	5.0 kg (±1%)
Dimensions	Magnet - (L) 532x(W)67x(T)39 mm - 21(L)x(W)2.63(T)1.54 in. Armature - (L) 185x(W)61x(T)16.5 mm - 7.28(L)x(W)2.40x(T)0.65 in.

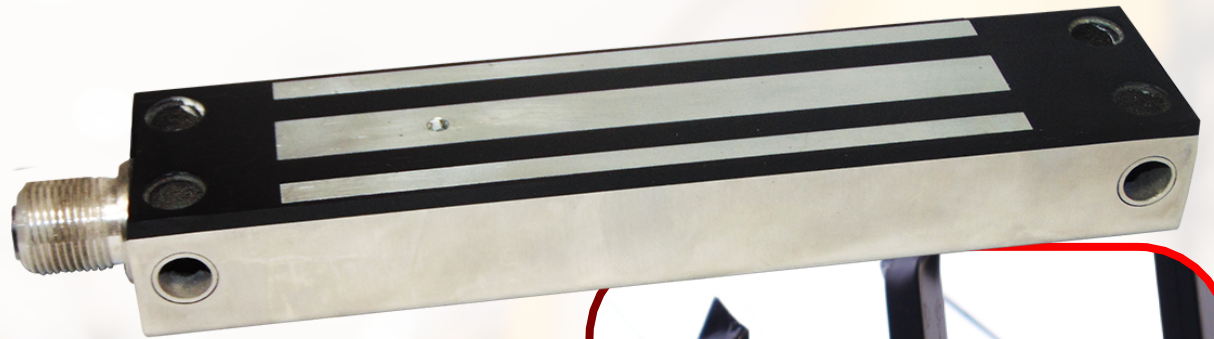


**3 YEARS
WARRANTY**

Outdoor Waterproof Gate Maglocks

VIS-SS800-G

Voltage Input	12 VDC / 24 VDC
Current Draw	12V / 420mA ; 24V / 210mA (±5%)
Holding Force	Up to 800 lbs (362 kg)
Hall Effect Contact	28 VDC, 0.2A, 5W
Anti-Rust Surface Treatment	Blue Zinc Plating
Operating Temperature	0~55° C (32~131° F)
Operating Humidity	0~95% (non condensing)
Weight (Magnet)	1.5 kg (±1%)
Dimensions	Magnet - (L) 220x(W)46x(T)28 mm Armature - (L) 182x(W)44x(T)12 mm



Holding force:
Up to 800 lbs
(362 kg)



All Parts
Sealed for
Water-
Resistance



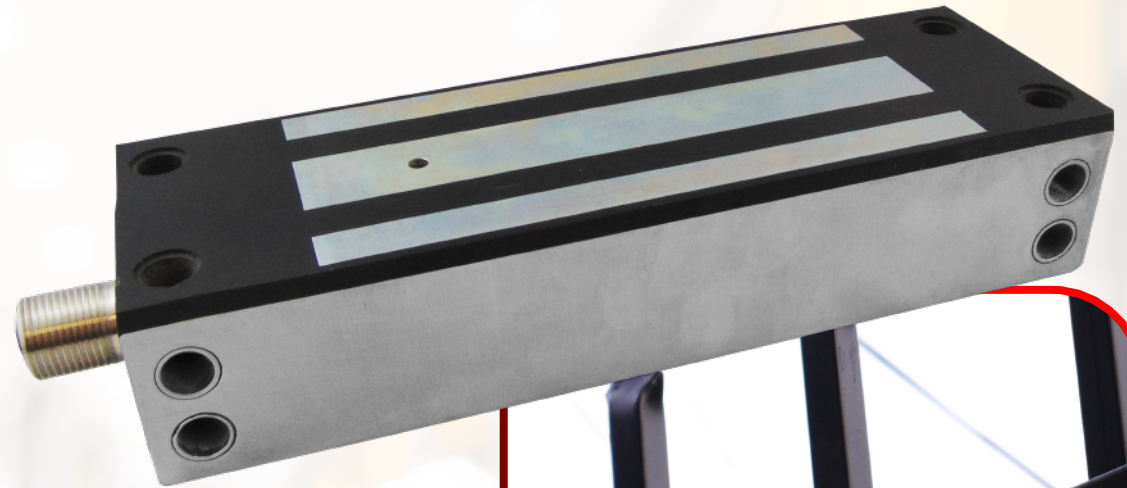
Fail Safe
(It locks with power)



Input Voltage:
12 or 24VDC

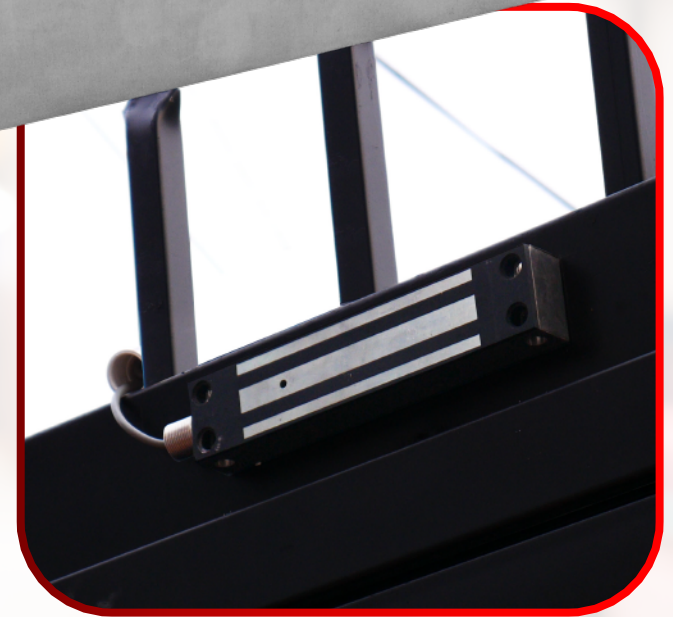
3 YEARS
WARRANTY

Outdoor Waterproof Gate Maglocks



VIS-SS1500-G

Voltage Input	12 VDC / 24 VDC
Current Draw	12V / 420mA ; 24V / 210mA (±5%)
Holding Force	Up to 1500 lbs (680 kg)
Hall Effect Contact	28 VDC, 0.2A, 5W
Anti-Rust Surface Treatment	Blue Zinc Plating
Operating Temperature	0~55° C (32~131° F)
Operating Humidity	0~95% (non condensing)
Weight (Magnet)	1.5 kg (±1%)
Dimensions	Magnet - (L) 230x(W)72x(T)48 mm Armature - (L) 200x(W)70x(T)16.5 mm



Holding force:
Up to 1500 lbs
(680 kg)



All Parts
Sealed for
Water-
Resistance



Fail Safe
(It locks with power)



Input Voltage:
12 or 24VDC

3 YEARS
WARRANTY

Indoor Double Door Maglocks

VIS-600D-LED

Size	500Lx48.5Wx25H (mm) - 19.67Lx1.90Wx0.98H (in.)
Armature Plate Dimension	180Lx38Wx11H (mm) - 7.09Lx1.50Wx0.43H (in.)
Holding Force	280kgx2 (600Lbsx2)
Input Voltage	12 or 24VDC
Current	12V/500mA*2 or 24V/250mA*2
Suitable	Wooden door, Glass door, Metal door, Fireproof door
Surface Temp.	≤+20°C (+68°F)
Operating Temp.	-10~+55°C (14-131°F)
Humidity	0~95% (on-condensing)
Cover Finish	Anodized aluminum
Lock Finish	Zinc
Armature Plate Finish	Zinc
Weight	4.2kg (9.26 pounds)



Holding force:
600lbs x 2 (280kg x 2)



Indoor use only



LED status indicators



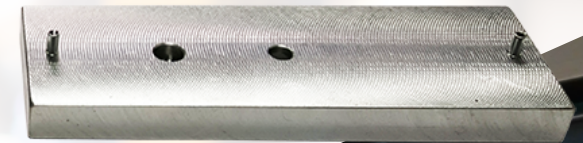
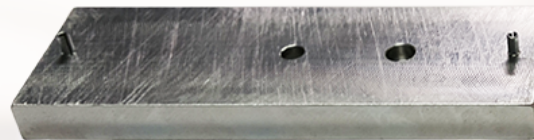
Input Voltage:
12 or 24VDC

3 YEARS
WARRANTY

Indoor Double Door Maglocks



VIS-1200D-LED



Dimension

Magnet - (L) 532x(W)67x(T)39 mm - 21(L)x(W)2.63(T)1.54 in.

Armature - (L) 185x(W)61x(T)16.5 mm - 7.28(L)x(W)2.40x(T)0.65 in.

Up to 1200 lbs x2 (545 kg x2)

Holding Force

12 or 24VDC

Input Voltage

Current

A total of 1000mA for both locks

Suitable

Wooden door, Glass door, Metal door, Fireproof door

Surface Temp.

≤+20°C (+68°F)

Operating Temp.

-10~+55°C (14-131°F)

Humidity

0~95% (on-condensing)

Cover Finish

Anodized aluminum

Lock Finish

Zinc

Armature Plate Finish

Zinc

Weight (Magnet)

5.0 kg (±1%)



Holding force:
1200lbs x 2 (545kg x 2)



Indoor use only



LED status indicators



Input Voltage:
12 or 24VDC

3 YEARS
WARRANTY

VIS-EL102-FSA

Function Fail Safe
Current Consumption 210mA

VIS-EL103-FSE

Function Fail Secure
Current Consumption 180mA

Voltage 12 DC
Installation Flush
Reversible Yes
Size 123.50L x 45.70W x 39H mm -
(4.86L x 1.80W x 1.53H in.)
Jaw deep 13.70 mm (0.54 in.)
Tested cycles 200.000
Temperature working range -25°C ~ 50°C (-13°F ~ 122°F)
Breaking resistance 3.450 N



Holding force:
770lbs (350 kg)



For Wooden Door,
Metal Door, PVC Door



Input Voltage:
12 or 24VDC



3 YEARS
WARRANTY

VIS-EL100-FSE

Function Fail Secure
Current Consumption 180mA

VIS-EL101-FSA

Function Fail Safe
Current Consumption 210mA

Voltage 12 DC
Installation Flush
Reversible Yes
Size 150L x 39,30W x 34H mm -
(5.90L x 1.55W x 1.34H in.)
Jaw deep 14.30 mm (0.56 in.)
Tested cycles 200.000
Temperature working range -25°C ~ 50°C (-13°F ~ 122°F)
Breaking resistance 3.450 N



Holding force:
770lbs (350 kg)



For Wooden Door,
Metal Door, PVC Door



Input Voltage:
12 or 24VDC



3 YEARS
WARRANTY

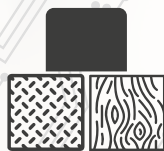
Electric Strikes Fail Secure / Fail Safe

VIS-EL104-FSESA

Holding Strength	350kg (770 pounds)
Function	Fail Secure / Fail Safe
Voltage	12 or 24VDC
Current Consumption	12VDC - 280mA // 24VDC - 140mA
Installation	Flush
Reversible	Yes
Size	124L x 44W x 33H mm -(4.88L x 1.73W x 1.30H in.) Jaw deep 13 mm (0.54 in.)
Suitable For	Wooden Door, Metal Door, PVC Door
Tested cycles	200.000
Temperature working range	-25°C ~ 50°C (-13°F ~ 122°F)
Breaking resistance	3.500 N



Holding force:
770lbs (350 kg)



For Wooden Door,
Metal Door, PVC Door



Input Voltage:
12 or 24VDC

3 YEARS
WARRANTY

Electric Bolt Locks Fail Safe



VIS-DP100-FSA

Voltage	DC12V - DC24V
Holding Force	800Kg (1750lbs)
Current consumption start	12 VDC 1000 mA - 24 VDC 500 mA
Current consumption standby	12 VDC 110 mA - 24 VDC 55 mA
Function	Fail Safe. It locks with power
Time Delay	Time Delay 0/3/6 sec; Unlock time delay: 6 sec (If the door is not pushed open after unlocking, it will automatically lock again.)
Bolt Diameter	13mm stainless steel out throw 16mm
Size	134,50L x 34W x 38H (mm) - 5.29L x 1.34W x 1.49H (in.)
Product + Packaging Weight	0.73Kg (1.61 pounds)
Operating Temperature	-20°C / +50°C (-4°F / 122°F)
Cycles Tested	300.000



Holding force:
1750lbs (800 kg)



Fail Safe
(It locks with power)



Time Delay:
0/3/6sec.



Input Voltage:
12 or 24VDC

3 YEARS
WARRANTY

Electric Bolt Locks Fail Safe

VIS-DP104ND-FSA-LED

Fail Safe	Unlocks if power is lost
Face Plate	150Lx25Wx37H (mm) – 5.90Lx0.98Wx1.46H (in.)
Bolt	16mm (0.62in.) DIA, stainless steel 13mm (0.51in.) throw
Voltage	DC12V (DC24V)
Start Current	960mA
Standby Current	180mA
Function	Fail Safe. It locks with power
Solid Bolt	polishing housing, 1000Kg (2200lbs) Holding Force
Suitable For	Electric Bolt For Narrow Door
Signal Output	Door status Output, NO/COM
Surface Temperature	Low Temperature
Induction Distance	8mm (0.31 in.)
Operating Temperature	-10~+55°C (14~131°F)
Operating Humidity	0~90% (non-condensing)
Special Designed	Tested to 500000 operations
Face place material	Stainless Steel
Weight	1.06kg (2.33 pounds)



Holding force:
2200lbs (1000 kg)



Fail Safe
(It locks with power)



Time Delay:
0/3/6sec.



Input Voltage:
12 or 24VDC

3 YEARS
WARRANTY

Electric Bolt Locks Fail Safe

VIS-DP105GD-FSA-LED

Voltage	DC12V - DC24V
Holding Force	1750lb (800kg)
Current consumption start	12 VDC 1000 mA - 24 VDC 500 mA
Current consumption standby	12 VDC 110 mA - 24 VDC 55 mA
Function	Fail Safe. It locks with power
Time Delay	0/3/6 sec; Unlock time delay: 6 sec (If the door is not pushed open after unlocking, it will automatically lock again.)
Door Type	Suitable for fully frameless glass door (8~12mm thickness)
Size	Lock body: 145Lx44Wx38D (mm) - 5.70Lx1.73Wx1.50D (in.) Bracket: 145Lx44Wx26D (mm) - 5.70Lx1.73Wx1.02D (in.)
Product + Packaging Weight	0.93Kg (2.05 pounds)
Operating Temperature	-20°C / +50°C (-4°F / 122°F)
Cycles Tested	500.000



Holding force:
1750lbs (800 kg)



Fail Safe
(It locks with power)



Time Delay:
0/3/6sec.



Input Voltage:
12 or 24VDC

3 YEARS
WARRANTY

VIS-DP102-FSE-LED

Voltage	12 or 24VDC
Holding Force	1200Kg (2600lbs)
Current	(DC12V): Standby 110mA
Current consumption start	12 VDC 1125 mA - 24 VDC 2245 mA
Current consumption standby	12 VDC 240 mA - 24 VDC 240 mA
Function	Fail Secure. It unlocks with power
Time Delay	Time Delay 0/3/6 sec; Unlock time delay: 6 sec (If the door is not pushed open after unlocking, it will automatically lock again.)
Size	125L x 24.50W x 35H (mm) – 4.92L x 0.96W x 1.38H (in.)
Product + Packaging Weight	0.64Kg (1.41 pounds)
Operating Temperature	-20°C / +50°C (-4°F / 122°F)
Cycles Tested	300.000



Holding force:
2600lbs (1200 kg)



Fail Secure
(It unlocks
with power)



Time Delay:
0/3/6sec.



Input Voltage:
12 or 24VDC

3 YEARS
WARRANTY

VIS-DP103WCY-FSE-LED

Voltage	DC12V - DC24V
Holding Force	1200Kg (2600lbs)
Current	(DC12V): Standby 150mA
Function	Fail Secure. It unlocks with power
Bolt	SUS 304 solid stainless steel
Size	250Lx30Wx49H (mm) - 9.84Lx1.18Wx1.93H (in.)
Product + Packaging Weight	1.46Kg (3.22 pounds)
Operating Temperature	-20°C / +50°C (-4°F / 122°F)
Cycles Tested	300.000
Time Delay	0/3/6 sec; Unlock time delay: 6 sec (If do not push the door after unlocking, again automatically lock)
Key Cylinder	Comes with a key cylinder and keys for manual unlock



Holding force:
2600lbs (1200 kg)



Fail Secure
(It unlocks
with power)



Time Delay:
0/3/6sec.



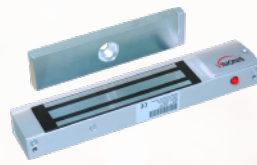
Input Voltage:
12 or 24VDC

3 YEARS
WARRANTY

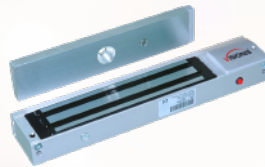
Comparison



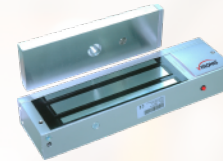
VIS-ML120



VIS-ML300LED



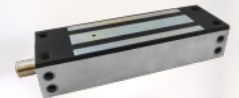
VIS-ML600LED



VIS-ML1200LED



VIS-SS800-G



VIS-SS1500-G

Holding Force

Up to 140lbs
(63kg)

300 lbs (136 kg)

600lbs (272 kg)

1200lbs (545 kg)

Up to 800 lbs
(362 kg)

Up to 1500 lbs
(680 kg)

Indoor or Outdoor

Indoor Only

Indoor Only

Indoor Only

Indoor Only

Indoor and Outdoor

Indoor and Outdoor

Current Draw

12V / 200mA;
24V / 100mA (±5%)

12V / 300mA;
24V / 150mA (±5%)

12V / 500mA;
24V / 250mA (±5%)

12V / 500mA;
24V / 250mA (±5%)

12V / 480mA;
24V / 240mA (±5%)

12V / 450mA;
24V / 220mA (±5%)

Weight (Magnet)

0.7 kg (±1%)

0.6 kg (±1%)

1.1 kg (±1%)

2.5 kg (±1%)

1.5 kg (±1%)

4.5 kg (±1%)



VIS-600D-LED



VIS-1200D-LED

Holding Force

Up to 600Lbsx2 (280kgx2)

Up to 1200 lbs x2 (545 kg x2)

Indoor or Outdoor

Indoor Only

Indoor Only

Current Draw

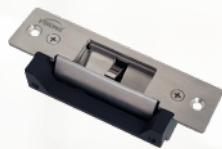
12V/500mA*2 or
24V/250mA*2

A total of 1000mA
for both locks

Weight (Magnet)

4.2kg (9.26 pounds)

5.0 kg (±1%)



VIS-EL104-FSESA



VIS-EL101-FSA



VIS-EL102-FSA



VIS-EL100-FSE



VIS-EL103-FSE

Holding Force

350kg (770 pounds)

350kg (770 pounds)

350kg (770 pounds)

350kg (770 pounds)

350kg (770 pounds)

Fuction

Fail Safe and Fail Secure Adjustable

Fail Safe. N/C It locks with power

Fail Safe. N/C It locks with power

Fail Secure. N/O It unlocks with power

Fail Secure. N/O It unlocks with power

Current

12VDC - 280mA / 24VDC - 140mA

210 mA

210 mA

180 mA

180 mA

Weight

0.50kg (1.10 pounds)

0.31kg (0.68 pounds)

0.39kg (0.86 pounds)

0.31kg (0.68 pounds)

0.39kg (0.86 pounds)



VIS-DP100-FSA



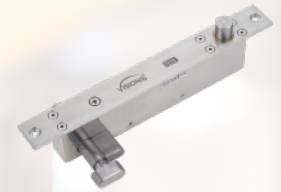
VIS-DP104ND-FSA-LED



VIS-DP105GD-FSA-LED



VIS-DP102-FSE-LED



VIS-DP103WCY-FSE-LED

Holding Force

1750lb (800kg)

1000kg (2200 pounds)

1750lb (800kg)

1200Kg (2600lbs)

1200Kg (2600lbs)

Fuction

Fail Safe. N/C
It locks with power

Fail Safe. N/C
It locks with power

Fail Safe. N/C
It locks with power

Fail Secure. N/O It
unlocks with power

Fail Secure. N/O It
unlocks with power

Current

Current: (DC12V)
Start 1A, standby 0.11A

Start Current: 960mA
Standby Current: 180mA

(DC12V): Working
Current 110mA /
Starting Current 1000mA

(DC12V): Standby 110mA

(DC12V): Standby 150mA

Weight

0.73Kg (1.61 pounds)

1.06kg (2.33 pounds)

0.93Kg (2.05 pounds)

0.64Kg (1.41 pounds)

1.46Kg (3.22 pounds)



At **Visionis Tech**, we believe that security should not be complicated, and we strive to make our products and services as easy to use as possible. We are dedicated to delivering exceptional value to our clients, and we take pride in helping them achieve peace of mind knowing that their premises and assets are secure.

Contact us today to learn more about how we can help you with your security needs.



Live Technical
Support

3 YEARS
WARRANTY

Claim
Warranty

Need help?

Contact us at support@visionistech.com | or call **1-800-340-0727** | (Mon – Fri: 8:00AM to 5:00PM EST Time).

www.visionistech.com