

The Visionis' series of access controllers is designed with latest structure with TCP/IP and RS485 communication interface. The communication data is encrypted to improve the security of system. The controller also supports offline operation and is designed with tamper-proof switch.

Features

- 32-bit high-speed processor.
- TCP/IP network communication, with self-adaptive network interface. The communication data is encrypted to ensure information security.
- The recognition and storage of card number with maximum 20 digits.
- Massive storage with 100,000 (can be expended to 200,000) users and 300,000 (can be expended to 600,000) access control events.
- Supports multi-door interlocking function, anti-passback function, multi-card function, first card function, super card and super password function.
- Online upgrade function and online remote control of the doors.
- Supports alarm event upload (including tamper-proof alarm, unsecured door alarm, forced entry alarm, delayed door alarm, duress card and code alarm, blacklist alarm and alarm for invalid card swiping attempts alarm).
- Short circuit attempts alarm and open circuit attempts alarm.
- Supports zone alarm input.
- Supports RS485 interface and Wiegand interface for accessing card reader. Wiegand interface supports W26/W34 and is seamlessly compatible with third-party card reader with Wiegand interface.
- Supports various card types such as normal/ disabled/ blacklist/ patrol/ guest/ duress/ super card, etc..
- Various indicators to show different device status;
- Supports time synchronization via NTP, manual or automatic method.
- Supports standby battery.
- Watchdog for device running status detection.
- Data can be permanently saved when the access controller is powered off.



Disclaimer: VISIONIS reserve the right to go ahead with any modifications of models or features or price without forewarning. All the information and specifications stated in this document are current at the time of publication. Attention: We are not responsible for the improper installation of this kit. If you are not handy with electrical equipment you should contact a professional electrician. You will also need to check with your local Fire authority to see if you need anything else to comply with local Fire Codes. We are not responsible for any damage or fees that can occur.

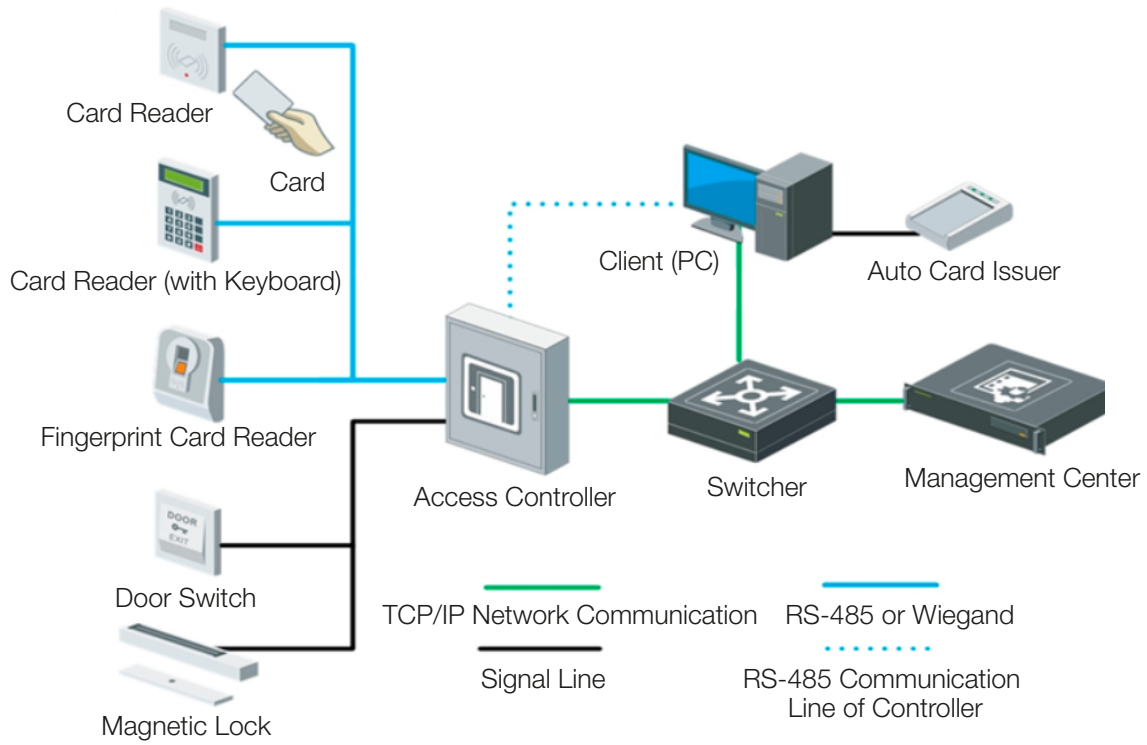


sales@visionistech.com

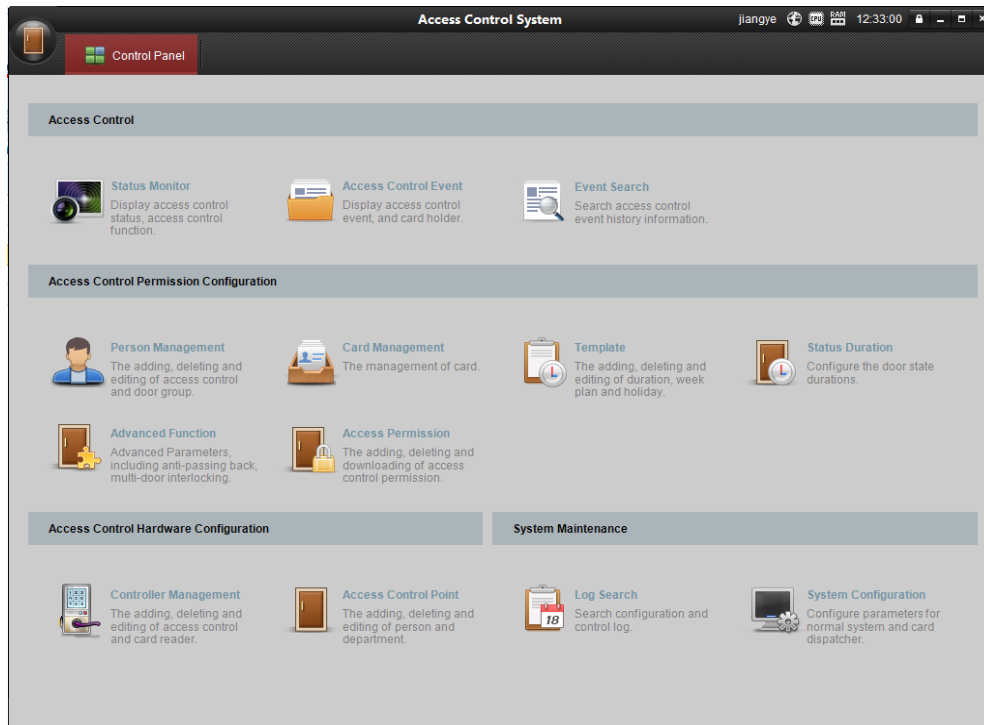


www.visionistech.com

Topological Graph



Client Software Interface



Disclaimer: VISIONIS reserve the right to go ahead with any modifications of models or features or price without forewarning. All the information and specifications stated in this document are current at the time of publication. Attention: We are not responsible for the improper installation of this kit. If you are not handy with electrical equipment you should contact a professional electrician. You will also need to check with your local Fire authority to see if you need anything else to comply with local Fire Codes. We are not responsible for any damage or fees that can occur.



sales@visionistech.com



www.visionistech.com

Model No.	VS-AXESS-2DLX
Working Voltage	DC 12V/1A
Power Dissipation (with Load)	≤100W
Processor	32-bit
Capacity	16M
Uplink Communication Interface	TCP/IP Network Interface and RS-485 Interface
Downlink Communication Interface	RS-485 and Wiegand (w26/w34)
Storage	users: 100,000 (200,000 expandable) access control events : 300,000 (600,000 expandable)
LED Indicator	Power Supply Status, Communication Status, Working Status
Built-in Clock	Yes
Accessible Card Reader	4 Card Readers (RS485 Interface) and 4 Card Readers (Wiegand Interface) Connectable
Input Interface	Alarm Input×4, Door Magnetic×2, Door Switch×2, Case Input×4, Tamper-proof×1
Output Interface	Door Switch Relay×2, Alarm Relay×2
Working Temperature	-20°C to +65°C (-4°F to +149°F)
Working Humidity	10% to 90% (Non-Condensing)
Dimensions (L×W×H)	370x345x90mm (14.6x13.6x3.5in.)
Certification	CE, FCC



Disclaimer: VISIONIS reserve the right to go ahead with any modifications of models or features or price without forewarning. All the information and specifications stated in this document are current at the time of publication. Attention: We are not responsible for the improper installation of this kit. If you are not handy with electrical equipment you should contact a professional electrician. You will also need to check with your local Fire authority to see if you need anything else to comply with local Fire Codes. We are not responsible for any damage or fees that can occur.



sales@visionistech.com



www.visionistech.com