



Indoor Access Control Biometric Fingerprint Reader/Card Reader Standalone



Fingerprint



Access Control



Attendance

User Manual

VIS-3031

Need help?
If you're having trouble installing our product, our support team is ready to assist you remotely via phone, or email.
Contact us at support@visionistech.com or call 1-800-340-0727

www.visionistech.com

Device Parameter

Communication: TCP/IP	Reader Interface: 1
Communication Rate: 10M/100M	Input Protection: TVS lightning protection, PTC surge protection
User Capacity: 3.000	Output Protection: Varistor Protection
Record Capacity: 70.000	Working Voltage: DC12V
Alarm Record Capacity: 20.000	Working Current: Non-load<1A
Exit Button: 1	Size: 122Lx77Wx45H (mm)
Door-Magnet: 1	4.80Lx3.03Wx1.77H (pulg)
Authentication Mode: Fingerprint/Card (ID or IC) / Password	

Advanced Features

- | | |
|--|--|
| <p>Calculate Attendance
Easily generate attendance reports from the software.</p> | <p>Alarm Push
Safety alerts for abnormal events, making management easier.</p> |
| <p>E-mail Service
Sends alarm notifications and attendance reports to the manager via e-mail.</p> | <p>Professional Comprehensive Security Management
Access control, alarm and attendance management system.</p> |
| <p>Staff Care
Monitor employee activity to help improve efficiency.</p> | <p>Multiple Identification Modes are Used in Combination
Fingerprint, RFID are all used</p> |

For advanced features, please use TITAN VSAXESS software.

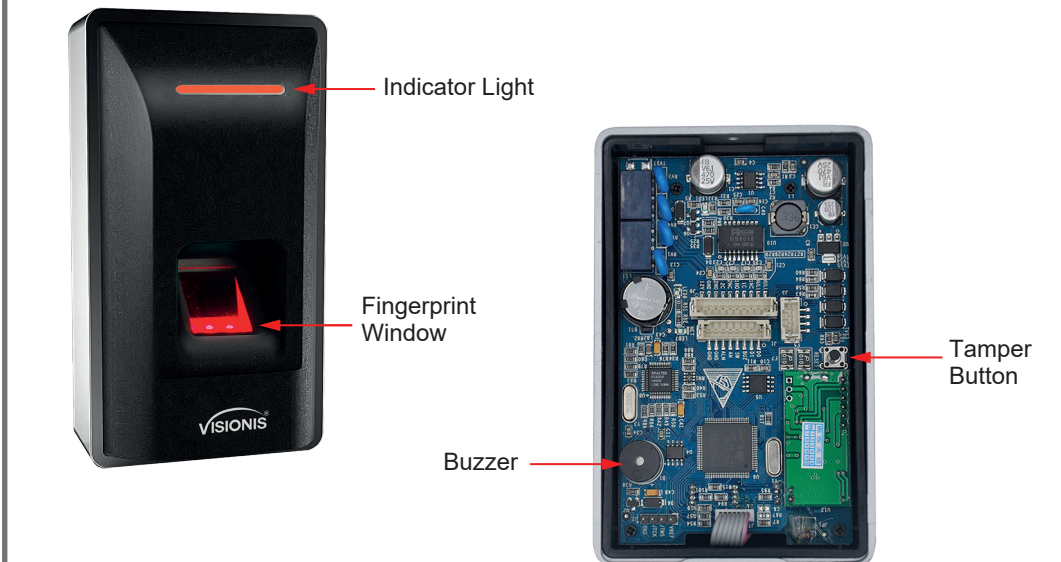
Professional Features

First-card	Any card can be first-card
Multi-card	Support 4 cards
Remote Access Control	Any door can be opened via center authentication
Enforced control	Forced open/close door for long time
Threaten Code	A group of 6 digits code
Open Door by Password	Every user can be assigned with one password
Door Normal Open Timed	Normal open can be set for three time segments
Door Bolt Mode	Normal open in unfixed time
Anti-passback	Two readers or all readers can be set in a group
Limit Valid Date	You can set a user validity period. After it expires, access will be denied. Can be set with hourly precision
Global Anti-passback	Users can configure all devices managed by the software as part of a global anti-passback group through the software.
Self-defined Input / Output	Self-defined input/output and relay
Activate/Dismiss Security	Any user can activate/dismiss security by card/fingerprint or software
Data Storage Mode	Cycled Storage
Video Record/Snapshot	Related video, record or snapshot via software
Access Authority	200 groups
Authentication Mode	Fingerprint/Card
Reader Protocol	Wiegand 26/34
Real-time Monitor	Software can real-time monitor the status of access and alarm
Alarm Linkage	Valid fingerprint, invalid fingerprint and alarm input can trigger the specified relay action.

For professional features, please use TITAN VSAXESS software.

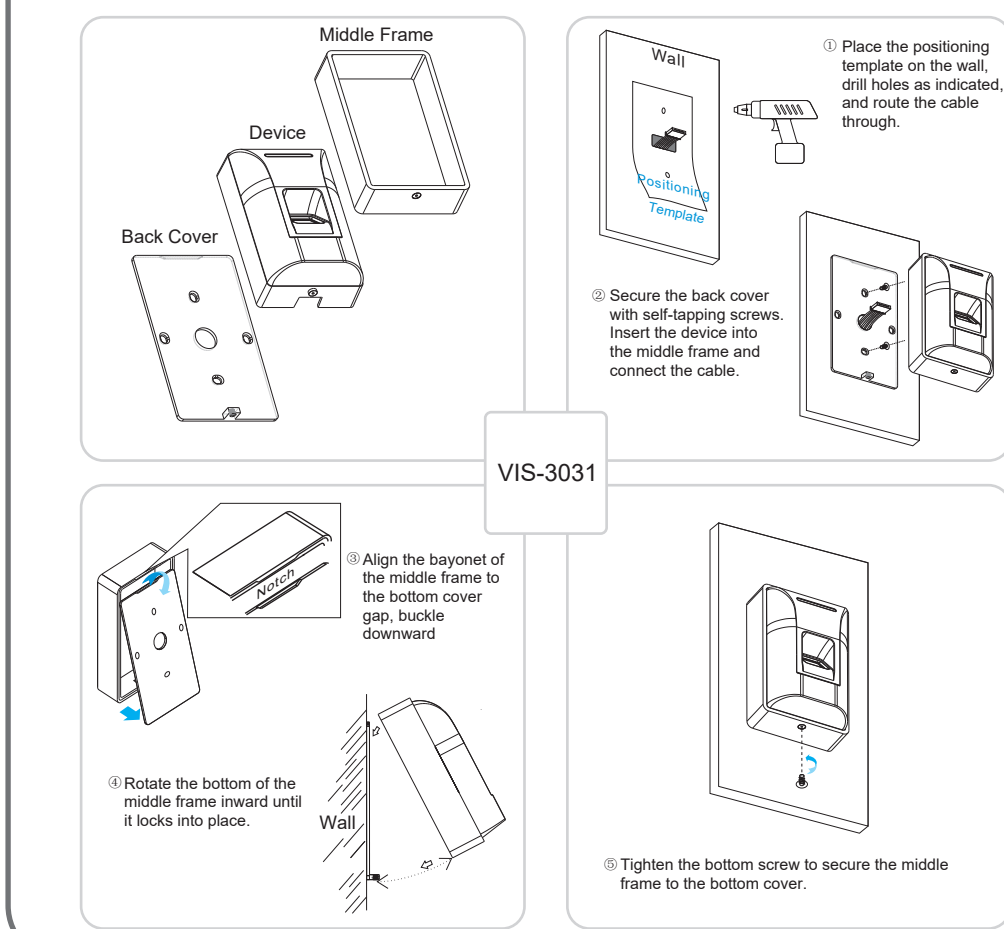
- Important Notices**
- If the following instructions are not followed, the system may malfunction or become damaged:
1. Do not make any connections or perform operations while the components or controller are powered on.
 2. Always connect the system according to the instructions provided in this manual.
 3. Each device must have a unique IP address. If the PC has two network cards, disable one of them.
 4. Use only the specified power supply.

Product Appearance



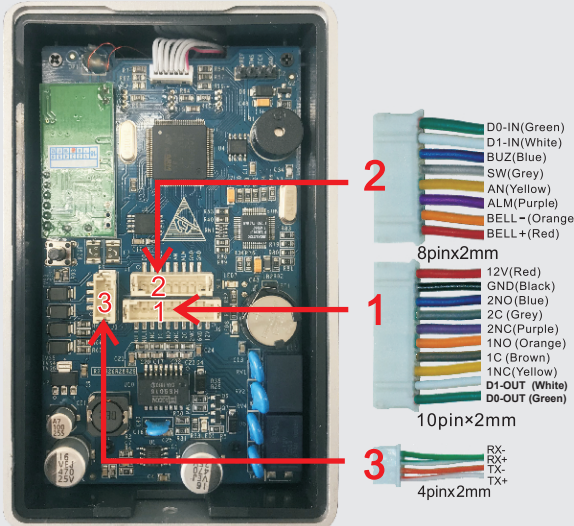
Tamper Button and Clear Communication Password:
Press the tamper button five times to clear the communication password. A beep will sound when the process is complete.

Product Installation

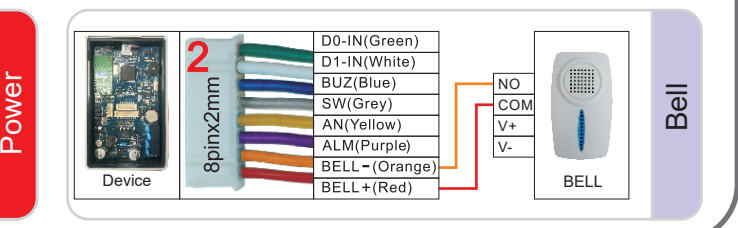
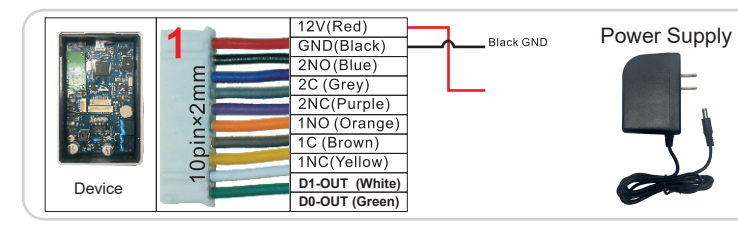
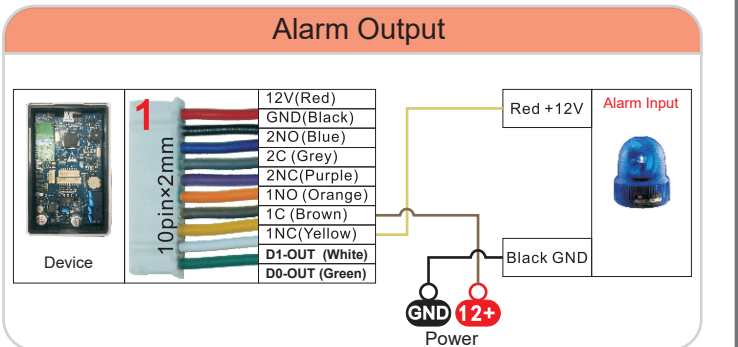
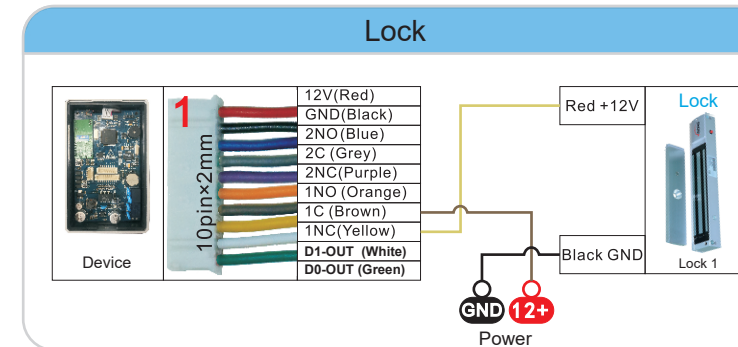
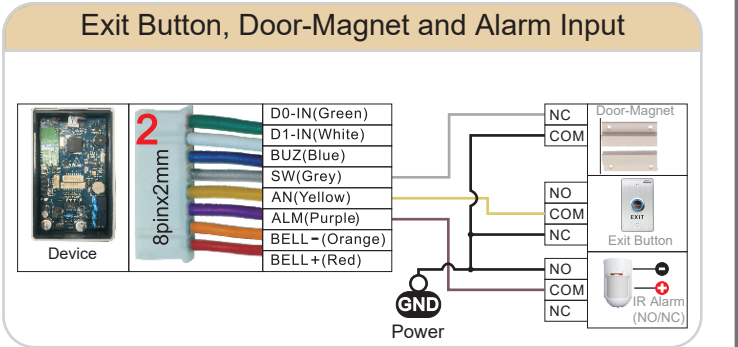
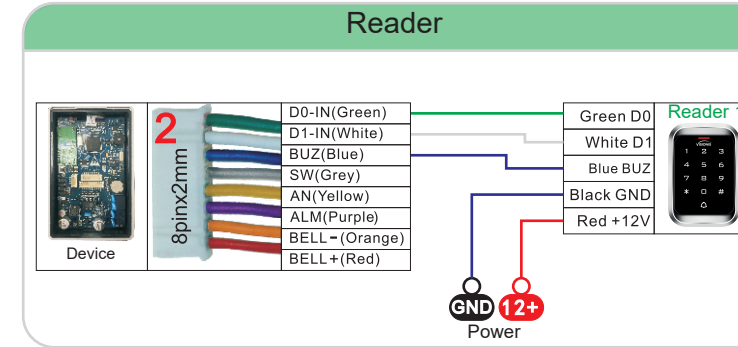
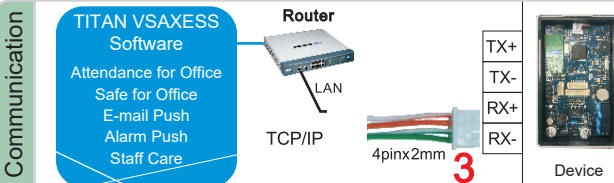


Wiring Diagram

Take VIS-3031 as an example:



With TITAN VSAXESS software, it's easy to manage employee access at the office, as well as monitor anti-theft measures, attendance, and overall staff management.



Disclaimer:
VISIONIS reserves the right to modify models, features, or prices without prior notice. All information and specifications in this document are accurate at the time of publication.

Attention: We are not responsible for improper installation of this kit. If you are not experienced with electrical equipment, please contact a professional electrician. Check with your local fire authority to ensure compliance with applicable fire codes. We are not responsible for any damages or fees that may occur.

If you need technical support you can contact us at:
support@visionistech.com
www.visionistech.com