



**Access Control Outdoor IP68 Weatherproof
Card Reader / Keypad Standalone No Software
Wiegand 26 Bits Delay and On/Off Toggle
Mode 125KHz EM Cards 2,000 Users**



User Manual

VIS-3008

www.visionistech.com

1. Description

The Visionis 3008 is a black weather-proof keypad/reader that is standalone, hardwired, and designed for access control. The keypad provides proximity entry for up to 2000 users. This keypad is standalone but it can also work with Wiegand protocol controllers.

Keep in mind, this keypad DOES NOT come with software and is standalone. If connected to a controller, the keypad would work based on the controller's software. The modern design and quality components provide for a great access control solution.

2. Features

- Ultra-low power consumption: Standby current is less than 30mA.
- Input & Output: Wiegand 26/Wiegand 34.
- Searching Time: Less than 0.1s after reading card.
- Backlight Keypad: Easy to operate at night.
- Doorbell interface: Support external wired doorbell.
- Access ways: Card, Pin code, Card & Pin code.

3. Specification

- Card type: EM/Mifare
- Working Voltage: DC12V-24V
- Card Reading Distance: 2~6cm (0.79~2.36in.)
- Capacity: 2000 Users
- Alarm Output Load: $\leq 20A$; Standby Current: $\leq 30mA$;
Lock Output Load: $\leq 3A$
- Door Relay time : 0~99S (Adjustable)
- Working Temperature: $-40^{\circ}C \sim 60^{\circ}C$ ($-40^{\circ}F \sim 140^{\circ}F$)
- Working Humidity : 10%~90%
- Dimensions: 111Lx46Wx22H (mm) - 4.37Lx1.82Wx0.87H (in.)
- Protection Level: IP68 - No ingress of dust; complete protection against contact (dust tight), and waterproof.

4. Sound and Light Indication

Operate Status	LED Light Color	Buzzer
Standby	Red flash	
Keypad		Beep
Operation Successful	Green	Beep
Operation Failed		Beep-Beep-Beep
Entering Programming	Red	Beep
Programmable Status	Orange	
Exit Programming	Flash Red Slowly	Beep
Door Opening	Green	Beep
Alarm	Flash Red Quickly	Alarm

5. Programming Guide

Function	Operation Steps	Notes
Change the master code	* The master code # 0 New code # New code #	Default factory master code is 999999. The user could be set factory default if the master code is forgotten
Add card user	* The master code # 1 Read card #	Cards can be added continuously
Delete a PIN code or a card user	* The master code # 2 Read card #	Cards can be deleted continuously
Delete all users	* The master code 20000 #	
Add public PIN code	* The master code # 6 6 # 4-6 digits #	There is only 1 public code
Delete public PIN	* The master code # 6 7 # 4-6 digits #	

6. Advance Setting

6.1 Add Users

Function	Operation Steps	Notes
Add card	* The master code # 1 Read card # ... #	Cards can be added continuously
Add card number	* The master code # 1 8 digits or 10 digits #	Automatic generation ID number from number 1-2,000
Add ID number+card	* The master code # 1 ID number # Read card #	Add user with specify ID number, easily find and delete.
Add ID number+card number	* The master code # 1 ID number # 8 or 10 digits #	Add user with specify ID number, easily find and delete.
Add PIN code user	* The master code # 1 ID number # Pin code #	The PIN is any 4-6 digits, ID number is from 1-2,000, PIN Code 1234 is not available.

6.2 Delete Users

Function	Operation Steps	Notes
Delete card	* The master code # 2 Read card # ... #	Cards can be deleted continuously
Delete card number	* The master code # 2 8 digits or 10 digits #	When the card is broken or get lost, you can delete the user by card number
Delete ID number	* The master code # 2 ID number #	When the card is broken or get lost, you can delete the user by ID number
Delete ALL users	* The master code # 2 0000 #	Delete ALL PIN code, card users and public PIN code.

6.3 Access Ways

Function	Operation Steps	Notes
By card	* [The master code] # 3 0 #	Only the card user could unlock the door, keypad is invalid
By card+PIN code	* [The master code] # 3 1 #	To enable this function, the user PIN code has to be changed.
By card or PIN code	* [The master code] # 3 2 #	Both card user and PIN users could unlock the door

6.4 Relay Output Time

Set door unlock time	* [The master code] # 4 0~300 #	Time range is from "0~300 seconds", default 5 seconds
----------------------	------------------------------------	---

6.5 Alarm Time

Alarm Time	* [The master code] # 5 0~3min #	Time range is from "0~3min", default 0 min
------------	-------------------------------------	--

6.6 Security Mode

Function	Operation Steps	Notes
Normal mode	* [The master code] # 7 0 #	(Default)
Lock mode	* [The master code] # 7 1 #	The device will be locked for 10 minutes if input 10 times invalid cards or codes continuously
Alarm mode	* [The master code] # 7 2 #	The device will alarm if input 10 times invalid cards or codes continuously.

6.7 Working Modes

Standalone access control mode	* [The master code] # 7 3 # The door will be locked automatically after open the door normally
Relay toggle mode	* [The master code] # 7 4 # The door will not be locked automatically. To lock the door, the user has to read the card or press the exit button.
Reader mode	* [The master code] # 7 5 26/34 # WG26/34 input and output

Data Backup: Example: Backup the data of machine A to machine B (Must close the Keypad output, (* [Master code] # 8 8 #))

The green wire and white wire of machine A connects with the green wire and white wire of machine B correspondingly, set B for receiving mode at first, then set A for sending mode, the indicator light turns green flash during the data backup, data backup is successful when indicator light turns red.

Data backup input	* [The master code] # 7 7 # The device will receive the data.
Data backup output	* [The master code] # 7 6 # The device will send the data.

6.8 LED Light & Buzzer & Keypad Settings

Indicator light always on	* [The master code] # 8 0 #	(Default)
Indicator light always off	* [The master code] # 8 1 #	Turn it off when the indicator is unnecessary
Buzzer on	* [The master code] # 8 5 #	Default
Buzzer off	* [The master code] # 8 6 #	The buzzer doesn't sound
Keypad output on	* [The master code] # 8 7 #	keypad output is turned on
Keypad output off	* [The master code] # 8 8 #	keypad output must be turned off during data backup

7. Revise user PIN code (Don't need go to programming state)

Function	Operation Steps
Revise user PIN code by card	* [Read card] 1234 # [New PIN code] # Repeat new PIN code # Factory default code: 1234
Revise user PIN code by master code	* [ID number] # [Old PIN code] # [New PIN code] # [Repeat new PIN code] #

8.To Reset to Factory Default and Match Master Card

Reset to Factory Default

Method 1: Power off, power on, when the indicator light turn orange, press the # key, swipe the first card as for master add card, swipe the second card as for master delete card, on hearing tick tick-tick sound thrice, the master code has been reset to 999999, factory default settings is successful.

Method 2: Power off, press the exit button continuously, power on, sound "tick-tick" twice, then release hand, the indicator light turns orange, if need to register master cards, please swipe the first card as for master add card, swipe the second card as for master delete card within 10s, if not, sound "tick-" once after 10s, the master code has been reset to 999999, factory default settings is successful.

* Registered user data won't be deleted when reset to factory default

9. Master Card operation

9.1 Add Card

[Read master add card] [Read the 1st user card] [Read the 2nd user card] ...
[Read master add card]

Note: The master add card is used to add card users continuously and quickly. When you read the master add card at the first time, you will hear short "BEEP" sound once and the indicator light turns orange, it means you have entered into add user programming. When you read the master add card at the second time, you will hear long "BEEP" sound once and the indicator light turns red, it means you have exited the add user programming.

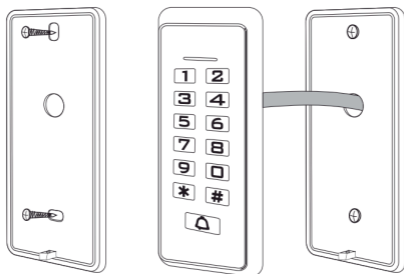
9.2 Delete Card

[Read master delete card] [Read the 1st user card] [Read the 2nd user card] ...
[Read master delete card]

Note: The master delete card is used to delete card users continuously and quickly. When you read the master delete card at the first time, you will hear short "BEEP" sound once and the indicator light turns orange, it means you have entered into delete user programming. When you read the master delete card at the second time, you will hear long "BEEP" sound once, the indicator light turns red, it means you have exited the delete user programming.

10. Installation

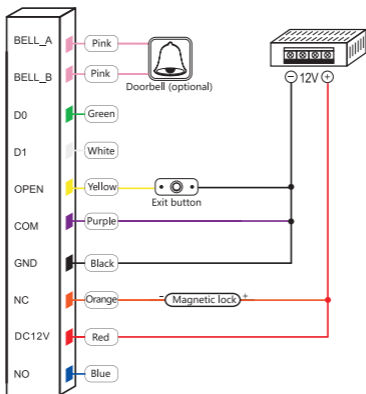
1. Drill the hole according to the size of the product
2. Fix the bottom shell with equipped screws.
3. Thread the lead wire from back cover.
4. Wrap the unused wires to avoid short circuit.
5. After wire connected, assemble the case, then finished.



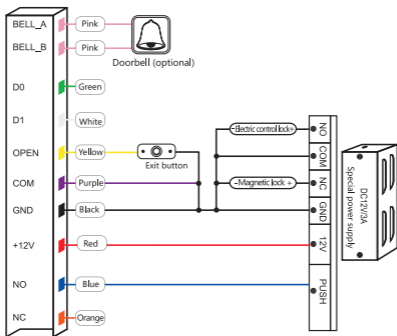
11. Wiring diagram

No.	Marks	Color	Description
1	BELL_A	Pink	Doorbell one end
2	BELL_B	Pink	Doorbell on the other end
3	D0	Green	Wiegand output
4	D1	White	Wiegand output
5	OPEN	Yellow	Exit button one end (On the other end connects GND) (Optional)
6	DC12V	Red	Positive of power supply
7	GND	Black	Negative of power supply
8	NO	Blue	Relay NO end
9	COM	Purple	Relay COM end
10	NC	Orange	Relay NC end

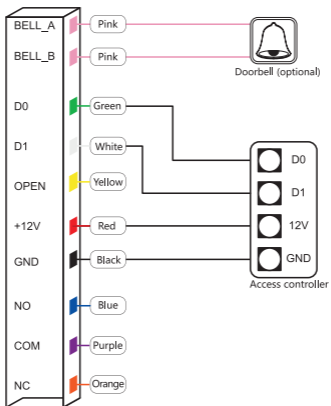
12.1 Diagram Common Power Supply



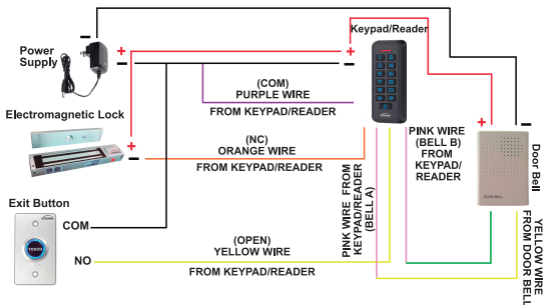
12.2 Diagram Special Power Supply



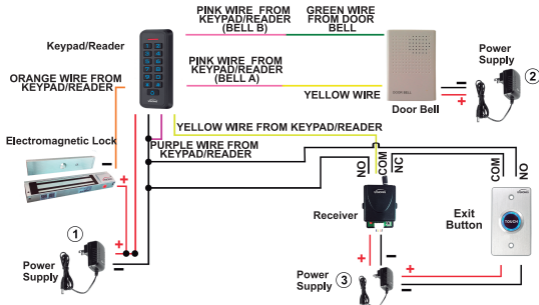
12.3 Diagram Reader Mode



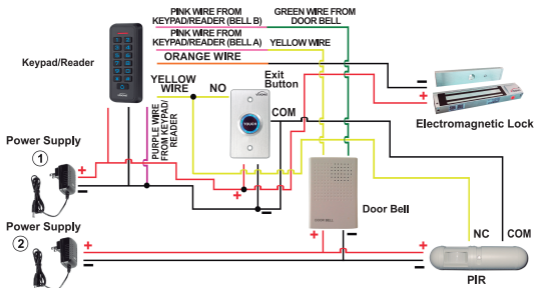
12.4 Connection with Accessories: Doorbell and Exit Button



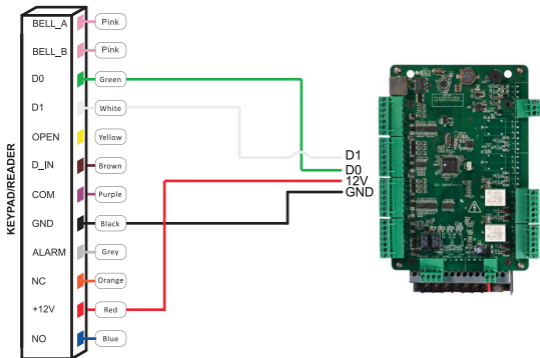
12.5 Connection with Accessories: Doorbell, Exit Button and Wireless Receiver



12.6 Connection with Accessories: Doorbell, Exit Button, and PIR



12.7 Connection with Access Control Panel



13. Packing List

Name	Model/Size	Quantity	Remarks
Standalone access control		1	
User manual		1	
Self tapping screws	Φ4mm×25 mm	2	Used in fixing
Rubber plug	Φ6mm×28 mm	2	Used in fixing
Star screw driver	Φ20mm×60mm	1	Special for Keypad
Star screw	Φ3mm×5mm	1	Used in fixing front cover and back cover

Warn Tip:

- Please do not repair the device privately, if there is any problems, please return it to the supplier.
- Before installation, please check carefully if there is concealed wire or wire tube in case of the trouble from breaking concealed wire when drilling. And please use safe glasses when drilling or fixing line clip.
- If the product update, the manual maybe be different, without prior notice.